

# PIEZO ICSI

## Patient Information Sheet

### What is PIEZO ICSI?

Intra-Cytoplasmic Sperm Injection (ICSI) is a treatment for male infertility where a single sperm is picked up with a sharp glass needle and injected into the egg. ICSI has been used in human IVF since 1992 and has been shown to be an effective means of assisting fertilisation when the number of normal looking motile (rapidly swimming) sperm are low.

During conventional ICSI a sharp bevelled needle is used to inject a sperm into the egg by puncturing the zona pellucida (shell of the egg). The needle is then placed into the centre of the egg and the IVF scientist applies suction to help rupture the egg membrane, before injecting the sperm. While this process works well for the majority of eggs, it is recognised to be a process that can result in damage to the egg (lysis). Patients of advanced reproductive age with fragile eggs may be particularly susceptible to loss of eggs due to ICSI damage (1).

In PIEZO ICSI a blunt needle is guided into the egg by an ultra-fast vibrating motion under gentle pressure. This pressure moves the needle head many times per second, helping “drill” the blunt needle through the zona pellucida outer coat and then into the egg. This drilling action of the PIEZO needle is less traumatic to an egg than the puncture and aspiration process used in conventional ICSI (see image below for difference between two types of injection needles and techniques).

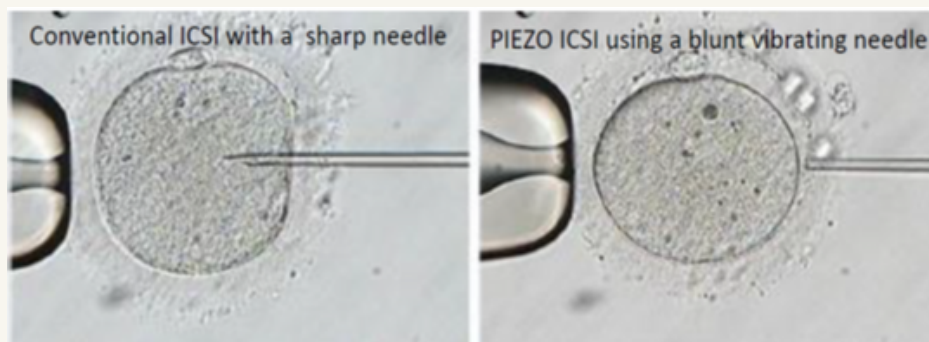
PIEZO ICSI was initially developed over 20 years ago in mouse IVF where it was noted that the use of sharp conventional ICSI needles damaged the very fragile mouse eggs, but the gentler PIEZO ICSI technique resulted in excellent fertilisation rates, with very few eggs lost to lysis (2). After successful use in animals, PIEZO ICSI started to be used in human IVF soon after (3,4). The photo below demonstrates the difference between conventional ICSI and PIEZO ICSI.

### What are the potential advantages of PIEZO ICSI over routine IVF or ICSI?

PIEZO ICSI has been used by several IVF clinics in Japan for many years with excellent results (3-6), but very few IVF units outside of Japan currently use PIEZO. In 2019 Monash IVF Group recognised the potential advantages of this technique and conducted its own trials of PIEZO ICSI all of which demonstrated superior fertilisation rate using PIEZO compared to traditional ICSI, with fewer eggs being damaged in the process. The pregnancy rates were comparable with both microinjection techniques. (7,9, 11).

The long-term data from Japanese IVF clinics using PIEZO ICSI shows a similar fertilisation advantage from PIEZO ICSI as seen in the Monash IVF Group trial, with some Japanese studies even suggesting superior live birth rates (3-6). While we are confident that PIEZO ICSI produces superior fertilisation rates compared to traditional ICSI, it is not yet certain if pregnancy rates are superior with PIEZO ICSI created embryos when analysed on a per embryo transferred basis. However, as PIEZO ICSI appears to improve fertilisation rates without negatively impacting embryo quality, it is possible that PIEZO ICSI will lead to the generation of more good quality embryos from each stimulated IVF cycle. This may translate into a higher cumulative pregnancy rate from all the fresh and frozen transfers using embryos generated from one stimulated cycle of IVF .

While there have been published studies on the use of the technology, all of which showed an equal or better safety profile of PIEZO ICSI, all studies have limitations. There may be certain patients who do not benefit from the technology, but these are yet to be identified. Monash IVF Group will continue to monitor the ongoing use and safety of the technology.



Difference between conventional ICSI and PIEZO ICSI

# PIEZO ICSI

## Patient Information Sheet

### Who may most benefit from PIEZO ICSI?

---

The following patient groups may benefit most from PIEZO ICSI:

- 1) Low fertilisation results with past conventional ICSI. Patients with very poor or failed fertilisation with conventional ICSI may not benefit from PIEZO given it's a gentler form of microinjection and consideration should be given to other methods for this patient group.
- 2) Increased oocyte degeneration rates with conventional ICSI. Some women's eggs are particularly fragile and may break open (lyse) with conventional ICSI.
- 3) Women aged over 38 years. Previous research has suggested these women may have more fragile egg membranes prone to lysis with conventional ICSI (1).
- 4) Poor embryo development. While not all embryos develop to be suitable for transfer or freezing, our study demonstrated that PIEZO improved outcomes in patients with poor embryo development (9).

PIEZO ICSI is not generally recommended for patients undergoing their first cycle, or where patients are using donor egg banks.

### Has PIEZO ICSI been shown to be safe?

---

PIEZO ICSI has been used for human IVF in Japan for over two decades with a safety record comparable to conventional ICSI (3-6). Monash IVF Group has used PIEZO ICSI since 2019 to date with no adverse outcomes relating to the PIEZO ICSI technology, including no differences in the babies born from PIEZO ICSI compared to conventional ICSI (7 & 9-10). However, as PIEZO ICSI is a relatively new treatment pioneered by Monash IVF Group in Australia, we currently only have limited live birth outcomes.

The PIEZO supplier is working through the process to obtain TGA approval for the technology. Until such time as that approval is granted, Monash IVF Group are able to apply to the TGA Special Access Scheme, to permit the use of the technology in your treatment cycle. This application requires your Patient ID Number, Initials and Date of birth of the person providing the eggs to be submitted, your full identifying information is not shared.

### What is the cost of PIEZO ICSI?

---

The cost of the PIEZO equipment is significantly more than traditional ICSI needles. Furthermore, the time taken for embryologists to complete PIEZO ICSI is also greater than traditional ICSI. For these reasons, the use of PIEZO ICSI will incur an additional cost to your cycle. It's recommended that you contact your local clinic for more information on this cost.

### What should I do if I have more questions?

---

If you have any further questions regarding whether PIEZO ICSI is suitable for you, we suggest you discuss this with your treating doctor who knows your clinical situation best.

# PIEZO ICSI

## Patient Information Sheet

### References

1. Furuhashi K, et al. Piezo-assisted ICSI improves fertilization and blastocyst development rates compared with conventional ICSI in women aged more than 35 years. *Reprod Med Biol.* 2019 Aug 24;18(4): 357-361
2. Kimura Y, Yanagimachi R. Intracytoplasmic sperm injection in the mouse. *Biol Reprod.* 1995 Apr;52(4):709-20.
3. Huang T, et al. The use of piezo micromanipulation for intracytoplasmic sperm injection of human oocytes. *J Assist Reprod Genet.* 1996 Apr;13(4):320-8.
4. Yanagida K, et al. The usefulness of a piezo-micromanipulator in intracytoplasmic sperm injection in humans. *Hum Reprod.* 1999 Feb;14(2):448-53.
5. Takeuchi S, et al. Comparison of piezo-assisted micromanipulation with conventional micromanipulation for intracytoplasmic sperm injection into human oocytes. *Gynecol Obstet Invest.* 2001;52(3):158-62.
6. Hiraoka K, Kitamura S. Clinical efficiency of Piezo-ICSI using micropipettes with a wall thickness of 0.625  $\mu\text{m}$ . *J Assist Reprod Genet.* 2015 Dec;32(12):1827-33. *J Assist Reprod Genet.* 2016 Apr;33(4):549.
7. D Zander-Fox, K. Lam, L. Pacella-Ince, C. Tully, H Hamilton, K Hiraoka, N McPherson and K Tremellen. PIEZO-ICSI increases fertilization rates compared with standard ICSI - A prospective cohort study. *RBMOnline* 2021
8. Dozortsev, et al. The optimal time for intracytoplasmic sperm injection in the human is from 37 to 41 hours after administration of human chorionic gonadotropin. *Fertil Steril.* 2004 82(6): 1492-96.
9. Caddy, M., Popkiss, S., Weston, G., Vollenhoven, B., Luk Rombauts, Green, M.P. and Zander-Fox, D. (2022). PIEZO-ICSI increases fertilization rates compared with conventional ICSI in patients with poor prognosis. *40(2)*, pp.389–398. doi:<https://doi.org/10.1007/s10815-022-02701-y>
10. Fujii, Y., Endo, Y., Mitsuhashi, S., Hayashi, M. and Motoyama, H. (2020). Evaluation of the effect of piezo-intracytoplasmic sperm injection on the laboratory, clinical, and neonatal outcomes. *Reproductive Medicine and Biology*, 19(2), pp.198–205. doi:<https://doi.org/10.1002/rmb2.12324>
11. D Zander-Fox, M Green, K Watson, R Turner, H Bakos, J Foo, L Pacella-Ince, M Caddy, N McPherson, L Rombauts. Improved fertilization, degeneration, and embryo quality rates with PIEZO-ICSI compared with conventional ICSI-A sibling oocyte split multi-centre trial. *2024 Fertility and Sterility* Mar 28:S0015-0282(24)00196-1

### Patient Declaration:

By my/our signatures below, I/we acknowledge we have read the PIEZO ICSI information sheet and consent to the use of PIEZO ICSI in my/our treatment.

My/our Fertility Doctor and/or Monash IVF Group staff have informed me/us about the PIEZO ICSI technology, including the procedure, risks and benefits; which I/we have understood.

---

**Full Name of Patient**

---

**Signature**

---

**Date**

---

**Full Name of Partner  
(if applicable)**

---

**Signature  
(if applicable)**

---

**Date  
(if applicable)**